

Lentil Ladybird Tutorial

In support of the Beads of Courage Programme



www.helenvanekdesign.co.uk

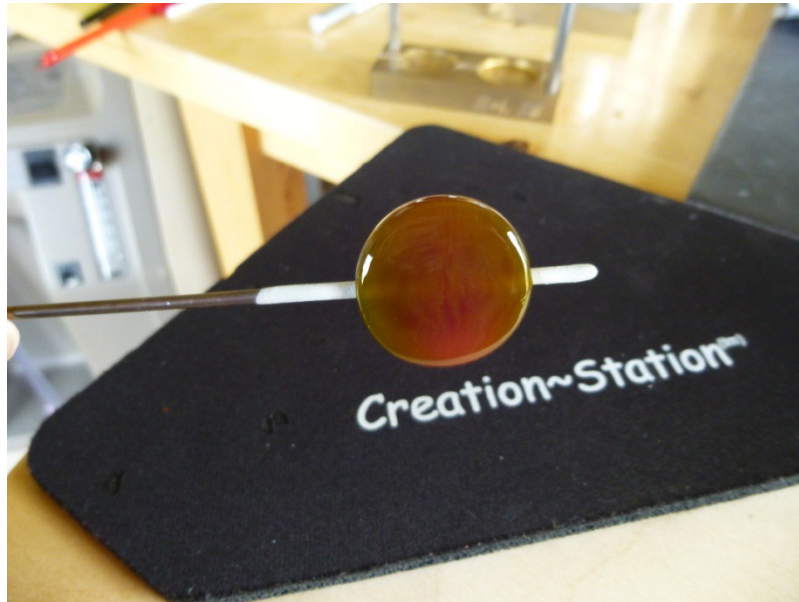
1. Gather your supplies. For this bead you will need:

- * A rod of green glass - I used CIM Poison Apple
- * A Rod of black glass - Reichenbach deep black is my choice - pulled into fine stringer
- * A rod of striking red glass - CIM Sangre is great!
- * A rod of an opaque red glass - any is fine
- * A rod of white glass - again any is fine - pulled into medium stringer
- * A lentil press - I use the Bavarian Beads M+L Lentil & Spree
- * A razor tool
- * A tool to flatten glass - I choose Karen Baildon's Magic Murrini Tool
- * A marver - hand held is the best



2. Make your base bead

Using a 2.4mm mandrel wind your green glass on and press into whatever design of lentil or spire press you have chosen. Ensure that your ends are smooth - marver in if necessary and fire polish.



3. Add white dots

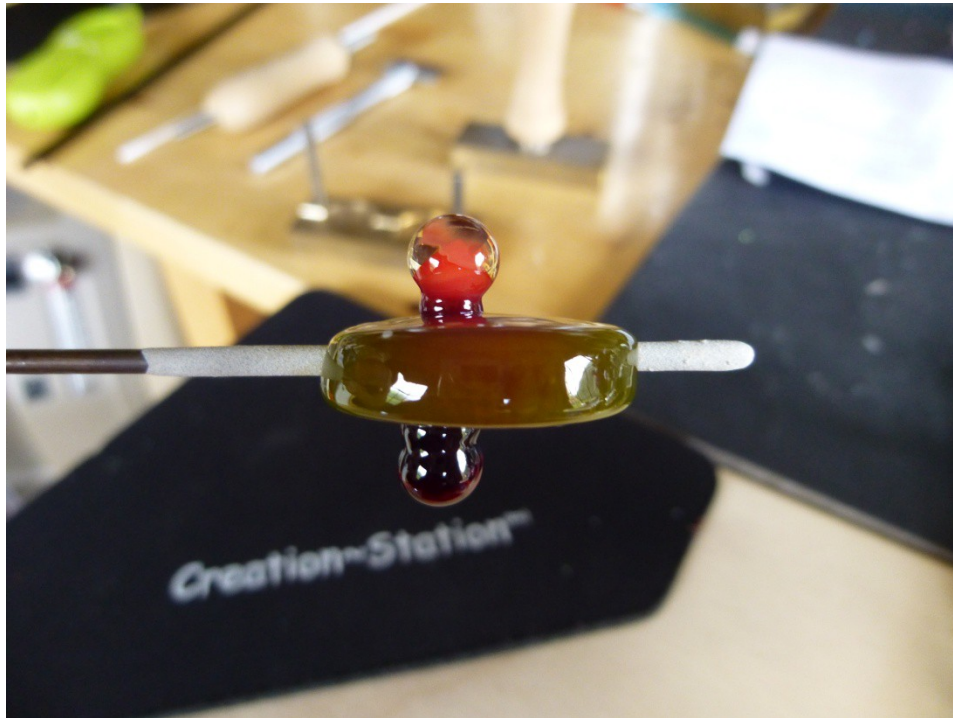
Using your medium white stringer place small dots around the perimeter of the face of both sides of your bead. Melt in completely. Press your bead again and fire polish.



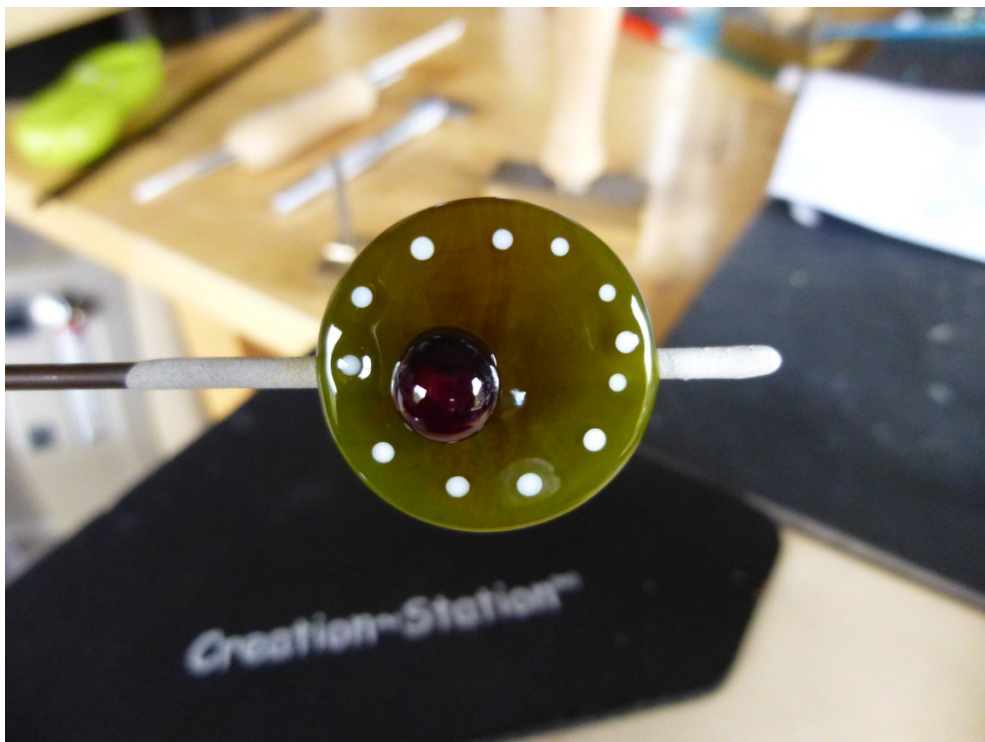
4. Add a dot of opaque red, followed by striking red

Using your rod of opaque red, add a pea sized dot to each side of your bead. The dot should be added to the left of centre as shown in the picture and left raised. I find it easier to start with small footprint and add the glass upwards. On top of your opaque red, add another pea sized dot of your striking red. Don't worry about striking the glass - this will happen throughout the process anyway. Your dots should be melted enough to look like one dot, but left raised.

Side View



Top View



5. Flatten your dots

Using your handheld marver, spot heat and flatten each dot. Don't flatten the dot flush with the bead - ensure it stays raised as shown in the picture - I find it easier to do this in stages. Then I add some small black dots all over the flattened red dot using my black stringer. Work cool and slowly to melt these in as to not distort the body of the ladybird. You may need to re-flatten with your marver when you have finished adding the dots.

Top view

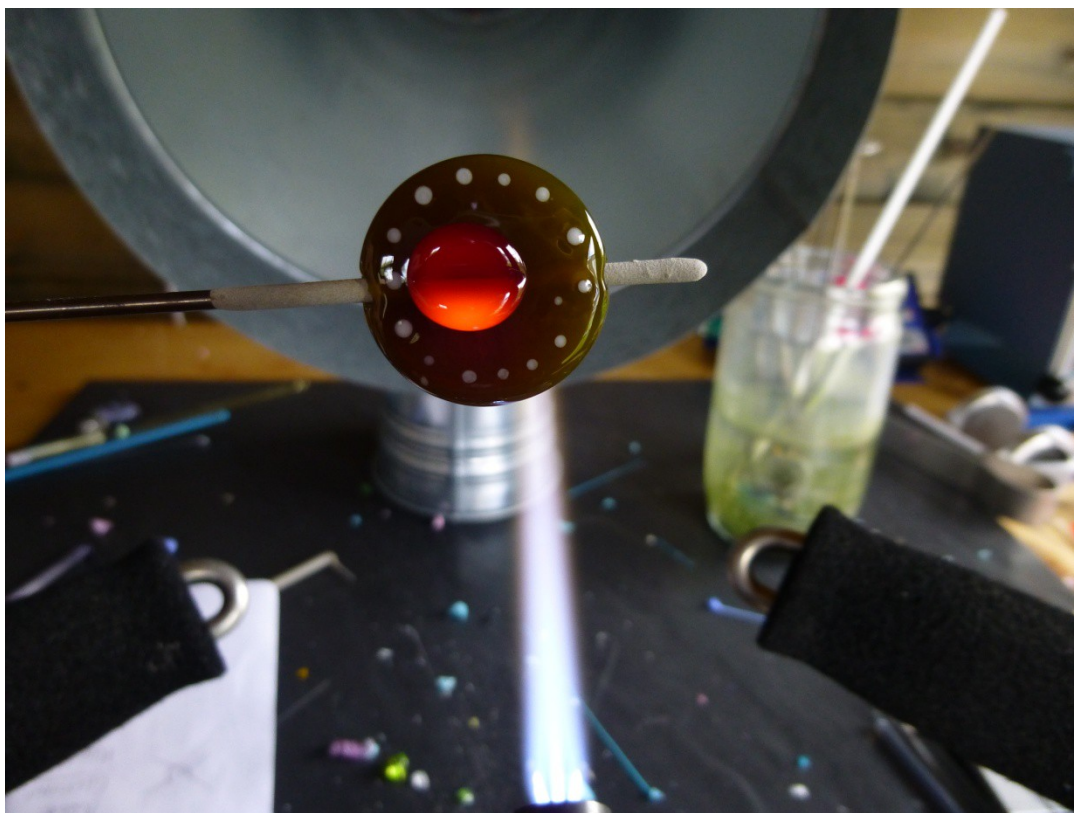
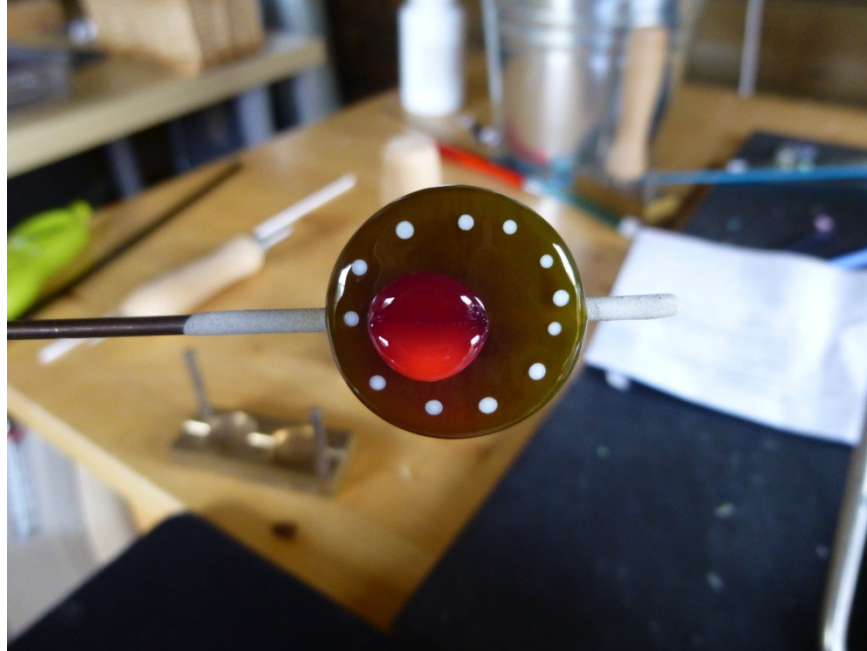


Side View



6. Razor a line down the middle of your dot

Using your razor tool, again spot heat your dot and make a crease running in the same direction as your mandrel along the width of your dot. Remember to keep your bead warm to prevent it cracking but not too warm to distort the shape as you can no longer press it at this stage. Do this for both sides of the bead:



(excuse the messy workbench)

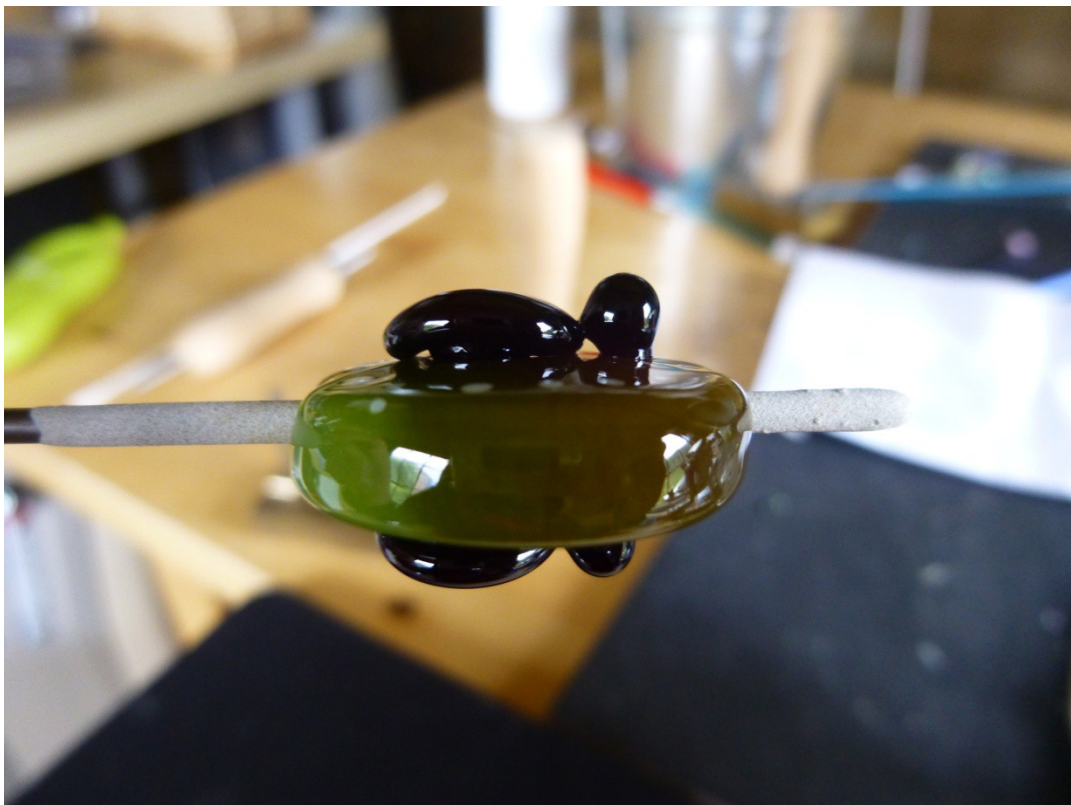
7. Add the ladybird's head

Using your black rod place a dot to the right of your ladybirds body, ensuring it is central to your red dot. Again, don't melt in flat.

Top View

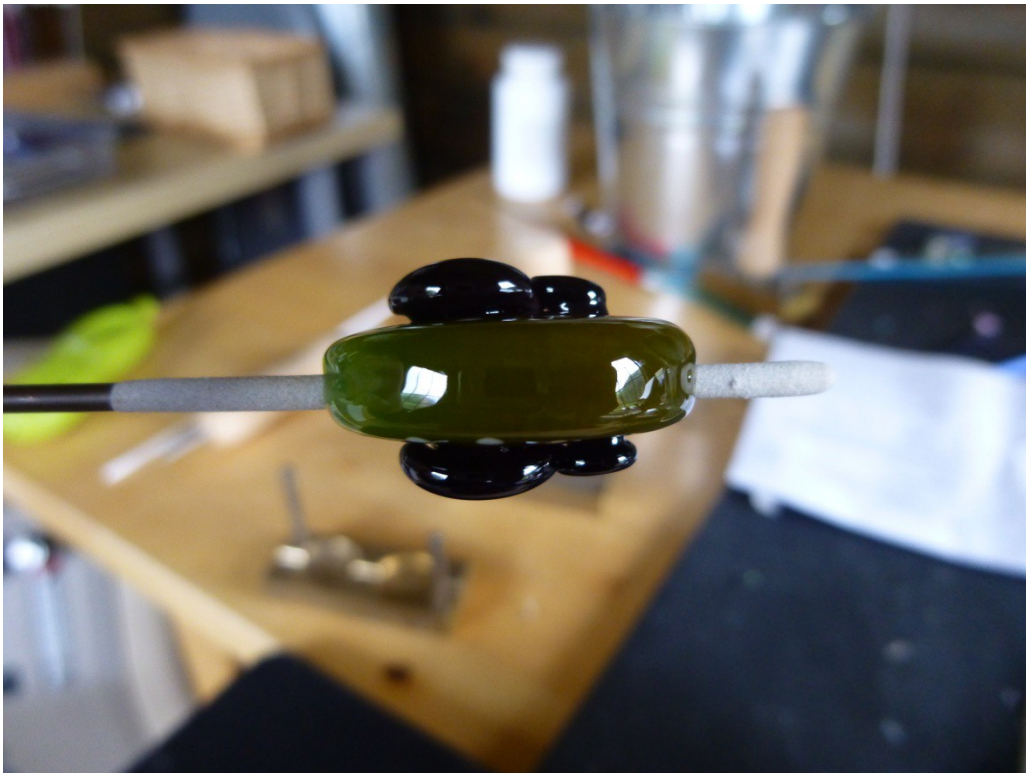


Side View



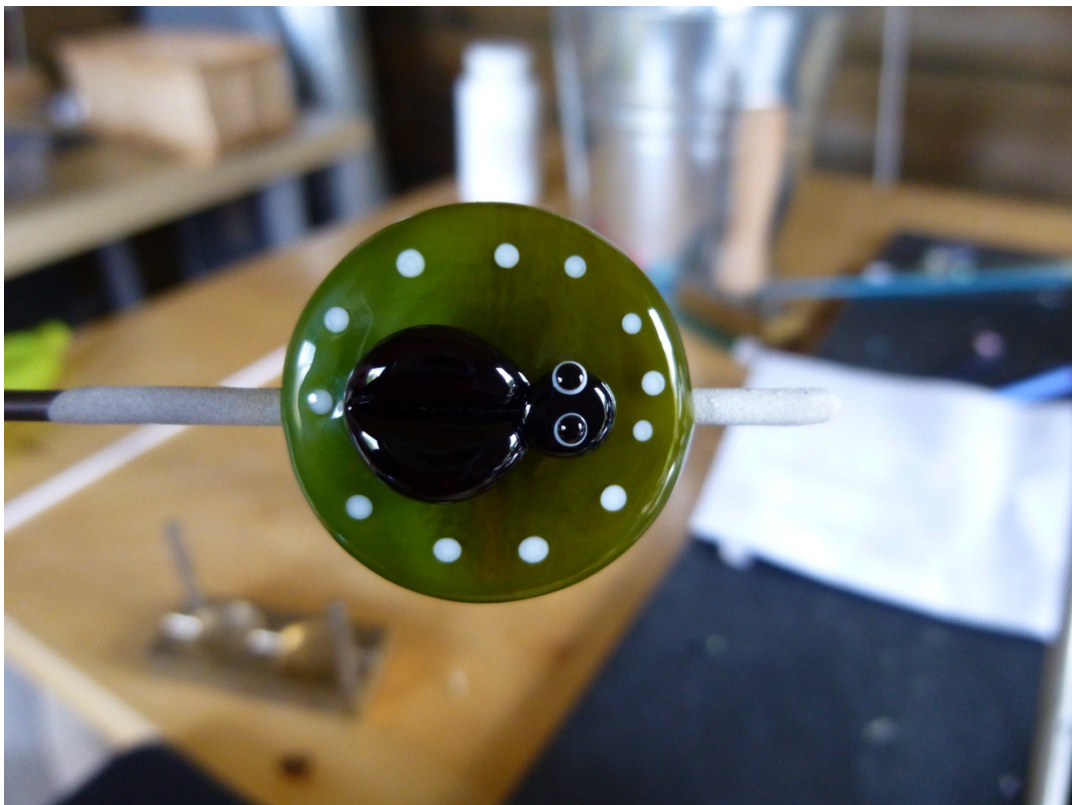
8. Flatten the ladybird's head

Using the magic murrini tool (or your marver) spotheat the black dots and flatten them slightly to match the ladybird's body:



9. Add the eyes

Take your white stringer and add two white eyes to the head. Then take your fine black stringer and add a dot of black on top of the white. Spot heat and flatten slightly with the marver or murrini tool:



10. Fire polish and place into the kiln. Voila:



Have fun experimenting with lots of colours and thanks for supporting Beads of Courage!



Please ensure that you are safe when you lampwork, within your skill range. If in doubt please seek professional tuition and advice before commencing lampworking.

Helen Vanek Design takes no responsibility for any issues that arise out of making this tutorial - your safety is your responsibility!